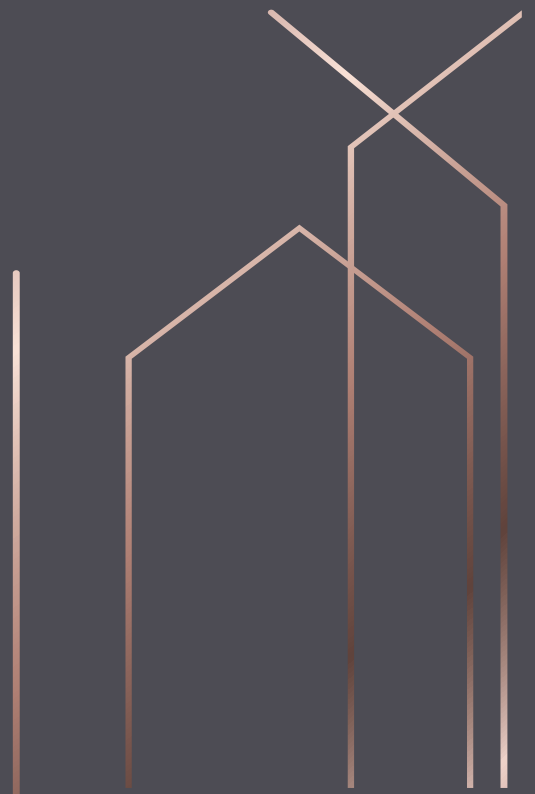
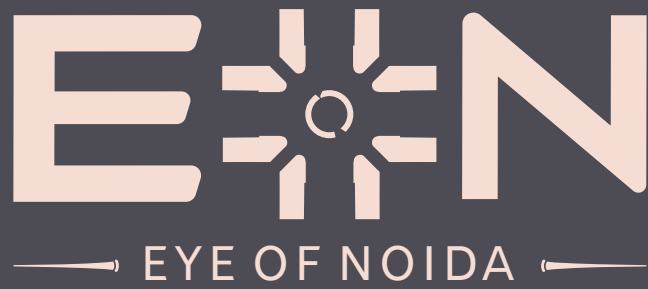
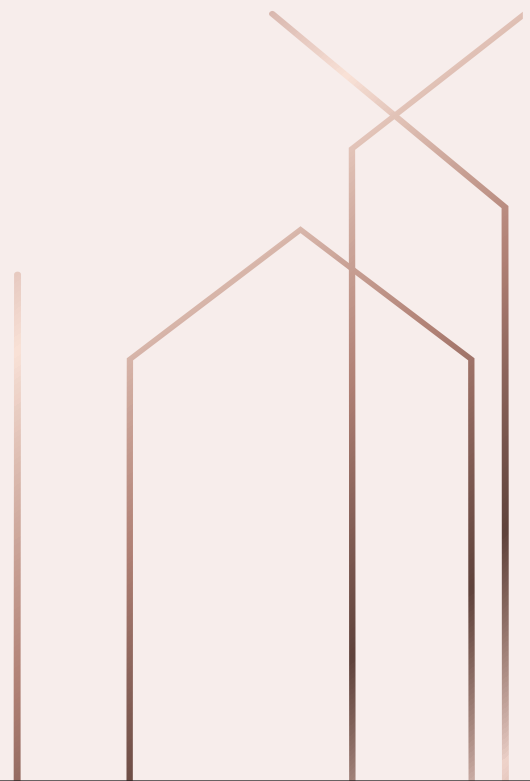
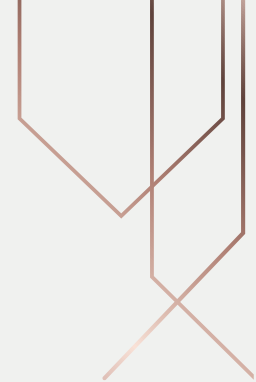


INFO PACK



FOR THOSE WHO
CAN SEE HOW
THE FUTURE
WILL UNFOLD.





The future is full of opportunities, and it belongs to those who can see it today. Those who can see what will be rather than what is now.

The life we always aspired for, the life we have always wanted to live is not far. It's right in the Eye of Noida.



FAIRFOX

Presenting



— EYE OF NOIDA —

DESIGN PHILOSOPHY



CIRCULATION

All vehicular circulation is designed for optimal safety and minimal collisions between pedestrian and vehicular movement.

The whole complex is connected on the surface as well as an elevated network of skywalks to enable cross-development barrier-free transit of shoppers, and office goers alike.

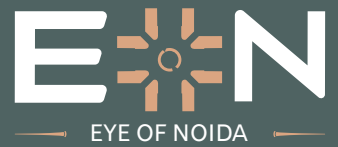
From the parking floor to the surface, there is an open green plaza with a sculptural staircase. Green-plaza drop-off for shoppers and office goers.





MORE THAN JUST A PLACE TO WORK

The EON office space was designed with a clear objective in mind: to create a distinctive, energetic environment that everyone who works there might enjoy. Here is a development that places sociability and networking at its very heart. One that encourages interaction and exchange between companies through shared spaces.



EON 1

PROMINENT A LOCATION

EON is located in the bustling sector 140-A Noida, this mixed-use complex is a triumph of creativity and craftsmanship, featuring an office tower and high-street retail zone along with a supercharged fashion and culinary experience.

The location is easily accessible:

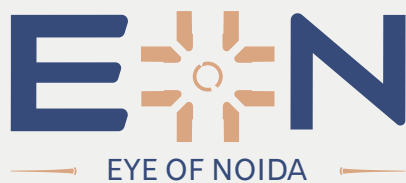
- Walking distance from Metro Station/FNG/Noida Expressway
- 20 Minutes' drive to Jewar International Airport
- 15 Minutes' drive to DND Flyway
- 2-5 Minutes' drive to nearest Hospital (Felix/Jaypee)



EON
EYE OF NOIDA

SPACE FOR HIGH-END RETAIL

The retail zone is an ideal setting for a wide variety of brands, from premium to the trendy, to the niche, spread across different floors. It is destined to evolve into a must-visit haven for Delhi/NCR residents thanks to its easy access and seamless connectivity.



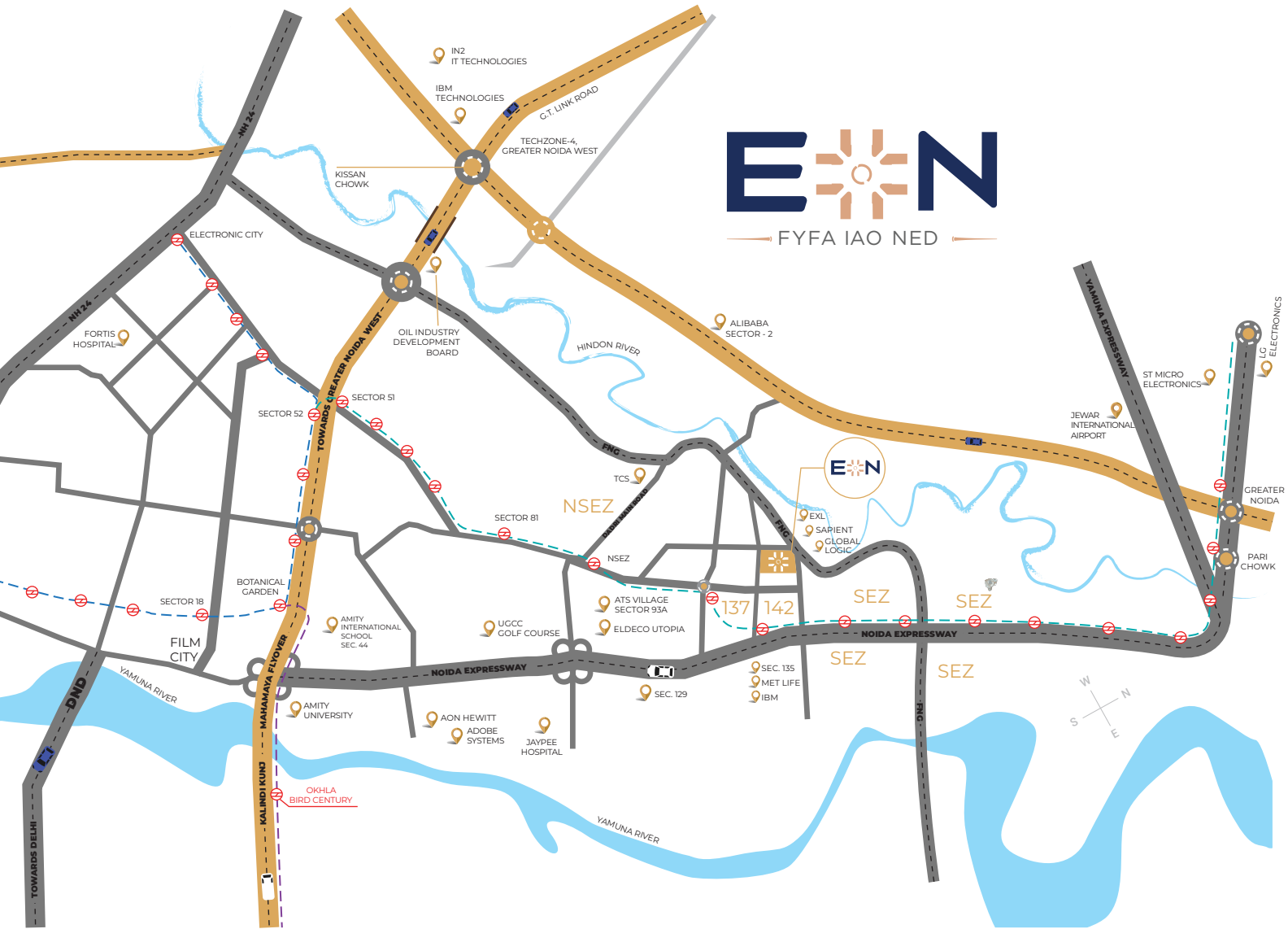
THE ULTIMATE DINING EXPERIENCE

A dining floor combines the finest of local and international themes with lively culinary events. A carefully chosen selection of restaurants, gourmet food courts, and concept dining will cater to the tastes and preferences of a discerning audience.

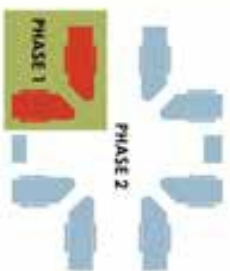


E N
EYE OF NOIDA

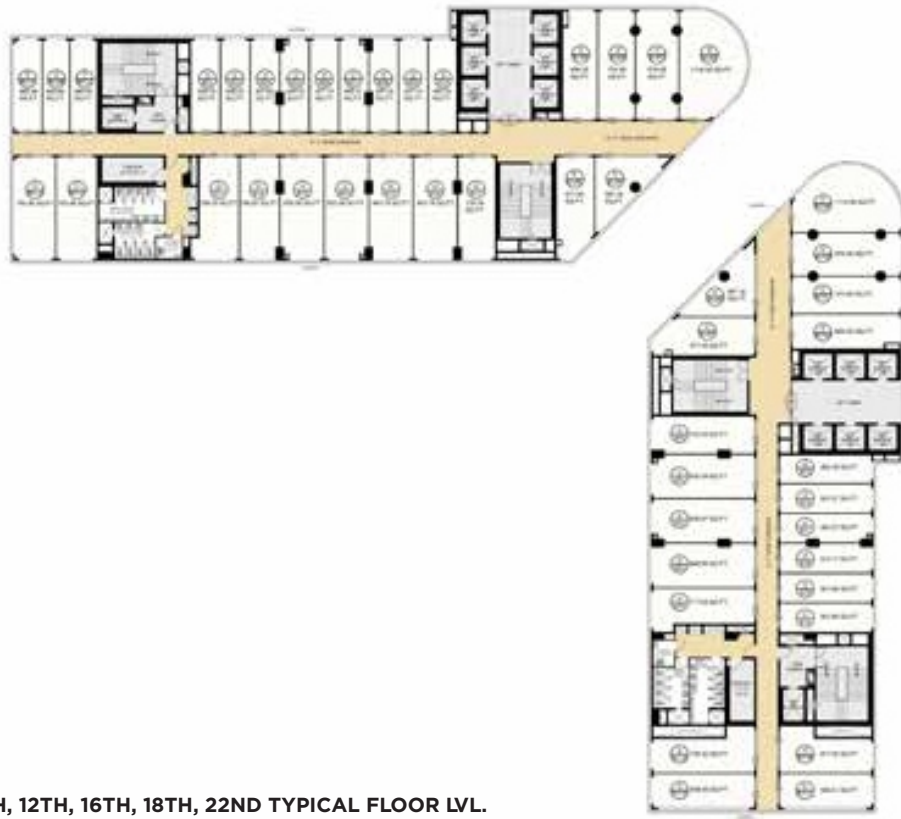
LOCATION ACCESSABILITY



SITE PLAN



- LEGEND**
1. Vehicular Entrance
 2. Vehicular Exit
 3. Road to Ramp
 4. Road to Shopping Plaza
 5. Shaded Avenue
 6. Green Boulevard
 7. Central Inner Grove with Mound
 8. Shopping Boulevard
 9. Pedestrian Shopping Plaza
 10. F&B Kiosk
 11. Double height Entrance lobby (30 ft)
 12. Project Storage
 13. Food Terraces
 14. Pedestrian Crossover
 15. Sky walk
 16. Multifunctional spaces
 17. Kid's Play Area
 18. Sand Pit
 19. Amphitheater
 20. Performance Deck
 21. Landscape Terraces
 22. Tree Boutique Seating
 23. Vehicular Boulevard
 24. Pedestrian Boulevard
 25. Pedestrian Entry
 26. Sculptural staircase - basement connection



8TH, 9TH, 11TH, 12TH, 16TH, 18TH, 22ND TYPICAL FLOOR LVL.



10TH, 13TH, 17TH, 21ST TYPICAL FLOOR LVL.



6TH FLOOR PLAN



7TH TYPICAL FLOOR



3RD, 4TH, 5TH FLOOR PLAN



SECOND FLOOR LVL.



FIRST FLOOR LVL.



GROUND FLOOR LVL.



19TH & 20TH TYPICAL FLOOR LVL.



14TH & 15TH TYPICAL FLOOR LVL.



E N1



FAIRFOX

Phone No.: 0120 4196 872

Email: info-fairfoxitinfra.com | Web: www.fairfoxitinfra.com

Site/Corporate Address: Plot No 01A, Sector 140 A, Noida, Uttar Pradesh - 201305

The images, appearances, colour, etc. given herein are mere artistic impression for representation purposes only and do not constitute an offer, an invitation to offer and/or commitment of any nature between the promoter and the recipient. The information herein is intended to give a general understanding of the subject matter and is subject to change without any prior notice. Readers are therefore requested to verify all details, including deed, amenities, services, terms of sale and payment schedule and other relevant facts independently with the promoter prior to availing of any decision of buying any plot in this land project. The landing offering and its governed by the terms and conditions of the Agreement for Sale only. In no event will the Promoter be liable for any claim made by the reader including seeking any cancellation and/or withdrawal for any of the inaccuracies in the information provided in the advertisement though all the efforts have been made to ensure accuracy. We also do not hold any responsibility for any information provided by any unauthorised patha (properly dealer or made available on any web/social media communication other than official website/whatsapp/telegram). [1] 4x1111 - 10 144 sq. ft. | 1 sq. mt. = 1.196 sq. yd.